

ENROLLMENT FORM

2012

TRADE: \_\_\_\_\_

YEAR: I II III IV (PLEASE CIRCLE ONE)

**PLEASE PRINT CLEARLY!**

NAME: \_\_\_\_\_

ADDRESS: \_\_\_\_\_

CITY: \_\_\_\_\_ STATE: \_\_\_\_\_ ZIP: \_\_\_\_\_

HOME PH: \_\_\_\_\_ BIRTH DATE: \_\_\_\_\_

E-MAIL ADDRESS \_\_\_\_\_

SOCIAL SECURITY NUMBER \_\_\_\_\_

EMPLOYER: \_\_\_\_\_

ADDRESS: \_\_\_\_\_

CITY: \_\_\_\_\_ ZIP: \_\_\_\_\_

WORK PH: \_\_\_\_\_

**MY SIGNATURE BELOW INDICATES I HAVE READ AND UNDERSTAND THE FOLLOWING:**

I agree I am responsible for all costs associated with the training program. Tuition is \$495 for 2nd semester 2012

**TUITION COSTS WILL NOT BE REFUNDED AFTER JANUARY 16, 2012. NON-REFUNDABLE BOOK FEES ARE \$260 FOR LEVEL 1; \$216 FOR LEVELS 2, 3, & 4. MEMBERS \$216 FOR LEVEL 1; \$173 LEVELS 2, 3, 4**

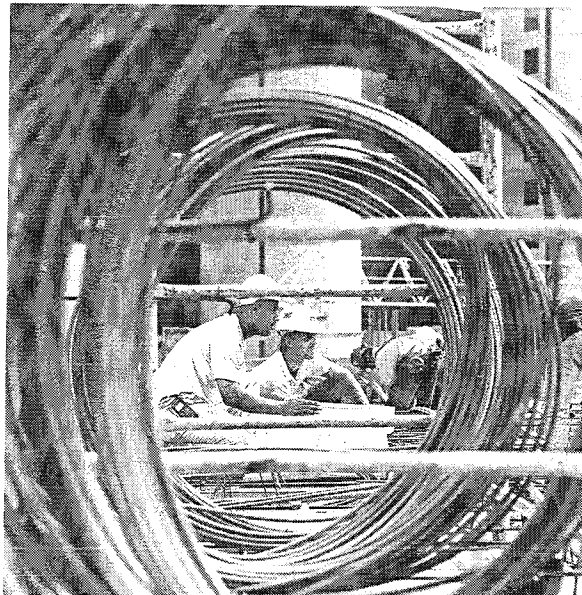
\_\_\_\_\_  
(SIGNATURE OF STUDENT)

\_\_\_\_\_  
(DATE)

RETURN TO: ABC EDUCATION CENTER  
2602 HARNEY STREET  
OMAHA, NE 68131

**APPRENTICESHIP AND CRAFT TRAINING**

**\* CARPENTRY \* ELECTRICAL \*  
\* PLUMBING \*  
ON LINE TRAINING NOW AVAILABLE**



Sponsored by

**ASSOCIATED BUILDERS & CONTRACTORS**

Accredited by the  
National Center for Construction Education and Research  
Curriculum approved by the  
Office of Apprenticeship and Training

**ABC Education Center  
2602 Harney Street  
Omaha, NE 68131  
(402) 344-4258**

2nd semester Omaha class schedule

**Carpentry 4**, Monday evenings  
5:30 pm to 8:30 pm  
January 9, 2012 thru April 9, 2012

**Electrical 1**, Monday evenings  
6:00 pm to 9:00 pm  
January 9, 2012 thru April 9, 2012  
Computer lab sessions required

**Electrical 2**, Tuesday evenings  
6:00 pm to 9:00 pm  
January 10, 2012 thru April 10, 2012

**Electrical 3**, Monday evenings  
6:00 pm to 9:00 pm  
January 9, 2012 thru April 9, 2012

**Electrical 4**, Tuesday evenings  
6:00 pm to 9:00 pm  
September 13, 2011 thru December 13, 2011

**Plumbing 1**, Monday and Tuesday evenings  
5:30 pm to 8:30 pm  
January 9, 2012 thru April 10, 2012

**Plumbing 2**, Monday and Tuesday evenings  
5:30 pm to 8:30 pm  
January 9, 2012 thru April 10, 2012

**Plumbing 3**, Monday and Tuesday evenings  
5:30 pm to 8:30 pm  
January 9, 2012 thru April 10, 2012

**Plumbing 4**, Monday and Tuesday evenings  
5:30 pm to 8:30 pm  
January 9, 2012 thru April 10, 2012

**Plumbing 5**, Monday and Tuesday evenings  
5:30 pm to 8:30 pm  
January 9, 2012 thru April 10, 2012



## 2012 Apprenticeship/Craft Training

We are proud to offer a blended program which combines technology and traditional classroom learning. Our program partners, NCCER and Pearson Prentice Hall, have developed an exceptional web based program that utilizes the Contren Learning Series curriculum, which is the Contren© Connect e-learning series.

### Contren ©Connect Features and Benefits

- Visual learning with videos clips and job site examples
- Auditory lessons contain online lectures and summaries
- Interactive exercises engage you in the learning process
- Select the optimal way for you to learn
- E-mail instructor with questions about web based activities
- Immediate feedback on quizzes and concept checks
- Flexibility in the scheduling
- Any computer with internet access allows you to review material at your convenience 24/7
- Instructor can determine your progress through an administrative tracker
- Highlights and personal notes emphasize vital information

Accredited through the National Center for Education and Research (NCCER). Approved by the Department of Labor, Office of Apprenticeship (DOL/OA) and the Nebraska Workforce Investment Board. Inquire about GI benefits through the Veterans Administration

Tuition costs are \$495 per semester. All students must purchase a new book with online component at \$260 for level one, and \$216 for upper levels. Discounted ABC member price is \$216 for year one (two books) and \$173 for upper levels. No refunds on books. No refunds after January 16, 2012.

## Building Power with Training Programs

Offering Carpentry, Electrical, and Plumbing

All first year students complete core curricula by means of web based training, concluding with testing in the classroom.

### Level One Carpentry Modules

❖ Orientation to The Trade; Building Materials, Fasteners, & Adhesives; Hand & Power Tools; Reading plans and Elevations; Floor Systems; Wall and Ceiling Framing; Roof Framing; Introduction to Concrete, Reinforcing Materials, and Forms; Windows and Exterior Doors; Basic Stair Layout-Complete four levels in two years.

### Level One Electrical Modules

❖ Orientation to The Trade; Electrical Safety; Introduction to Electrical Circuits, Electrical Theory, Intro to the National Electrical Code; Device Boxes; Hand Bending; Raceways and Fittings; Conductors & Cables; Basic Electrical Construction Drawings; Residential Electrical Services; Electrical Test Equipment-Four year program.

### Level One Plumbing Modules

❖ Introduction to the Plumbing Profession; Plumbing Safety; Plumbing Tools; Introduction to Plumbing Math; Introduction to Plumbing Drawings; Plastic Pipe and Fittings; Copper Pipe and Fittings; Cast-Iron Pipe and Fittings; Carbon Steel Pipe and Fittings; Corrugated Stainless Steel Tubing; Fixtures and Faucets; Introduction to Drain, Waste, and Vent (DWV) Systems-Four year program.

❖ 10 Hour OSHA class included for all 1<sup>st</sup> year students

Visit our website at [www.abcnebraska.org](http://www.abcnebraska.org). Contact information Theresa Ptacek [theresap@abcnebraska.org](mailto:theresap@abcnebraska.org) (402) 344-4258  
ABC Education Center, 2602 Harney Street, Omaha, NE 68131